



Monday 1st March 2021

LO: to tell the time to the hour.

Warm up

True or false?

There are 60 seconds in 1 minute.

true

There are 13 numbers on a clock.

false

There are 60 minutes in 1 hour.

true

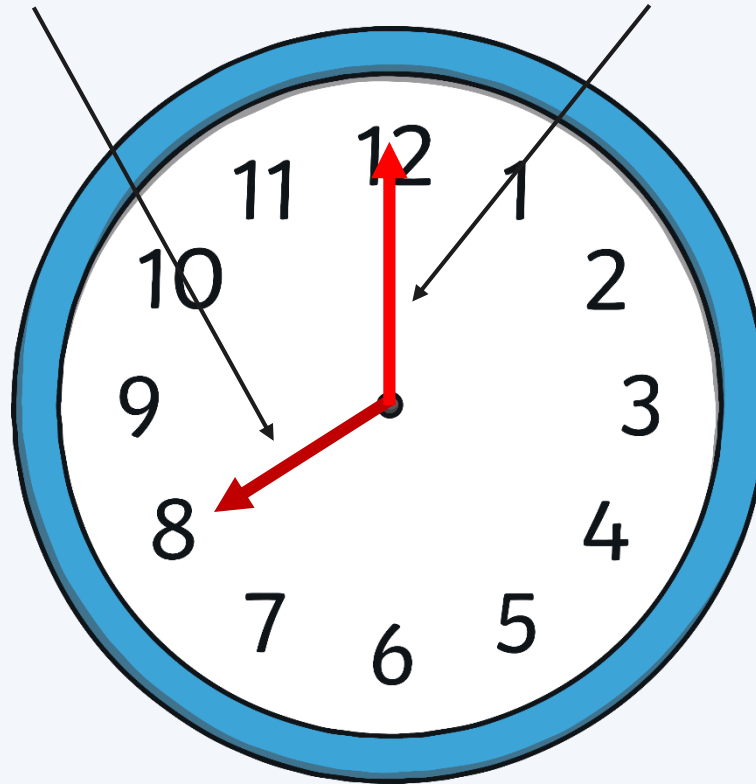
Hours and Minutes

This is the **hour** hand.

This is the **minute** hand.

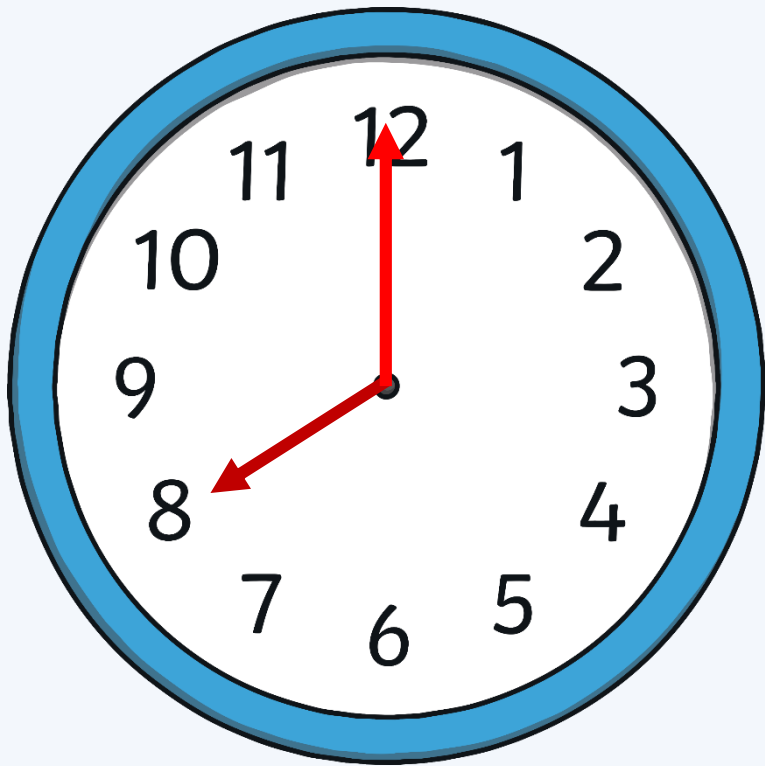
It is the shortest hand on the clock.

It is longer than the hour hand.



Hours and Minutes

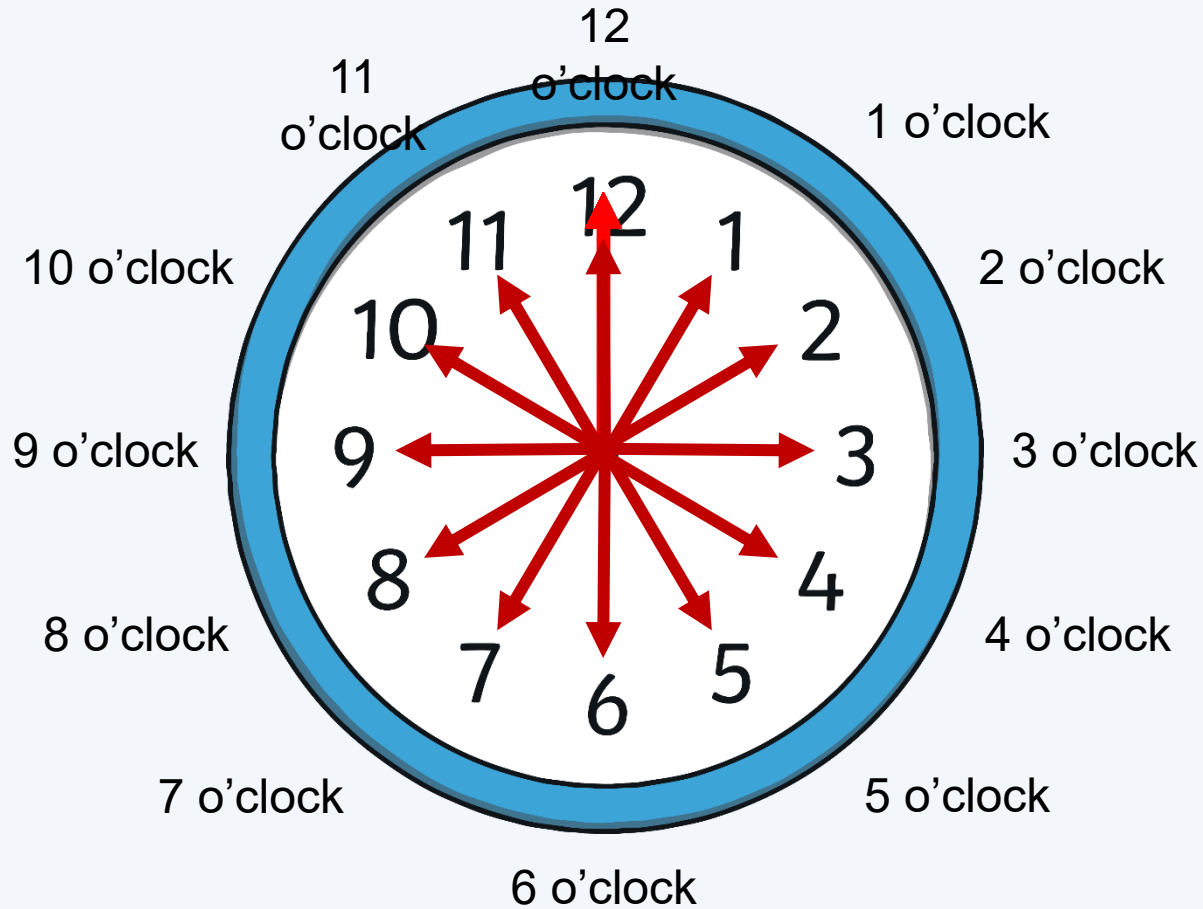
When the minute hand is pointing to 12, it is showing a full hour.
We call this time '**o'clock**'.



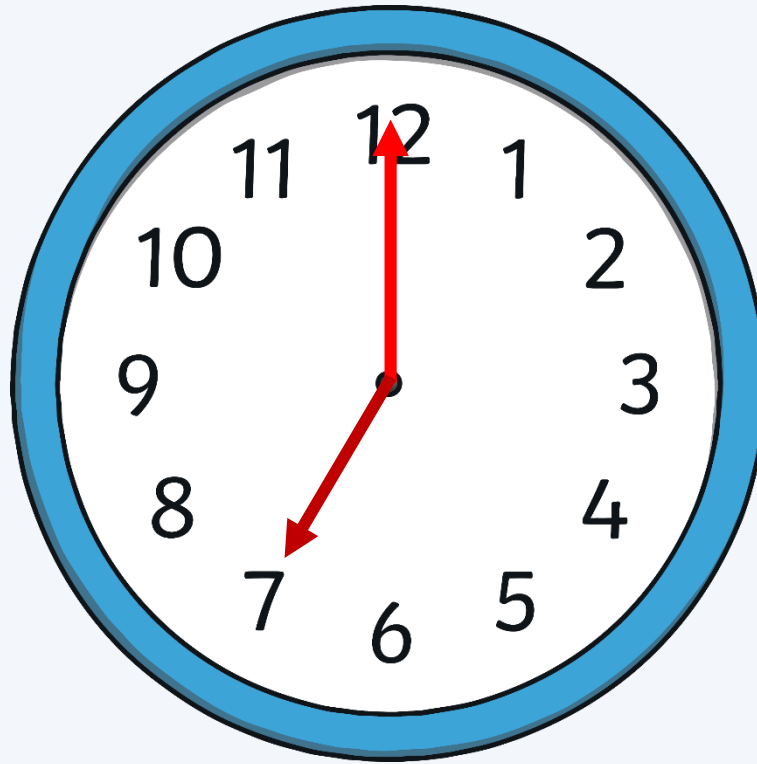
On this clock, the hour hand is pointing at the 8 and the minute hand is pointing to the 12.

This clock is showing that the time is **8 o'clock**.

What Time Is It?

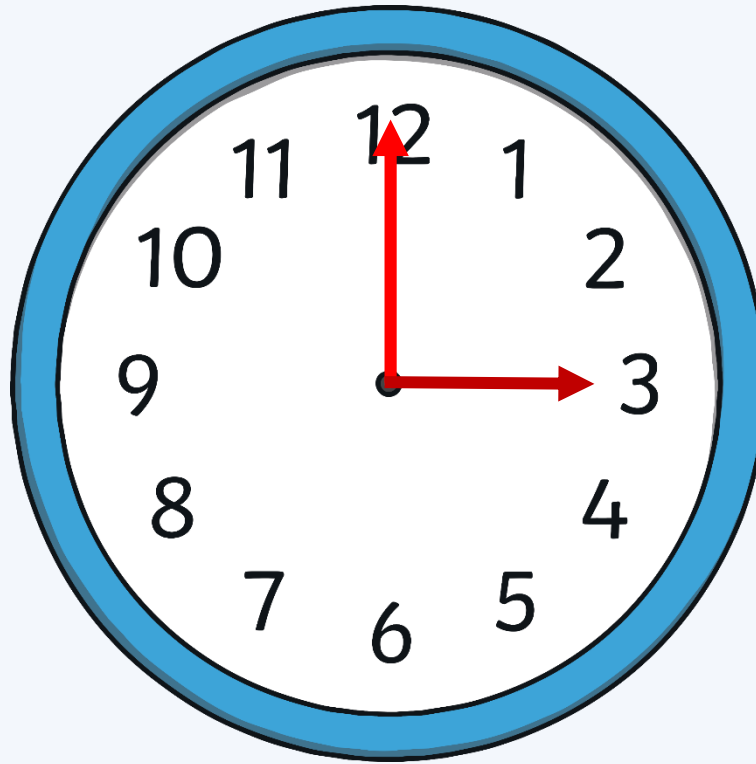


What Time Is It?



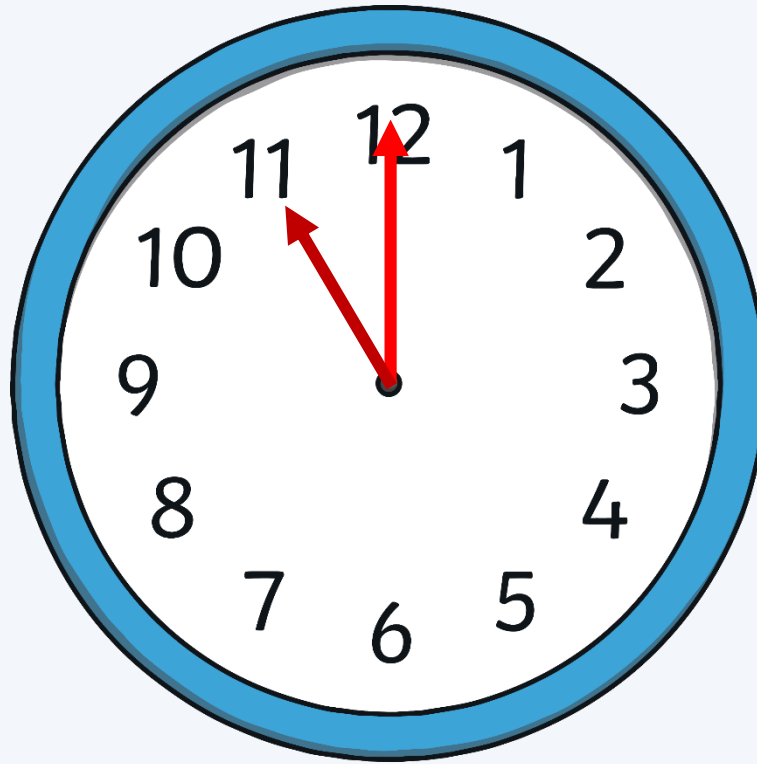
It is 7 o'clock.

What Time Is It?



It is 3 o'clock.

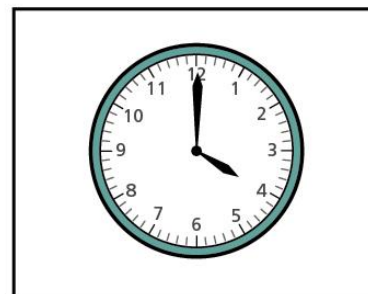
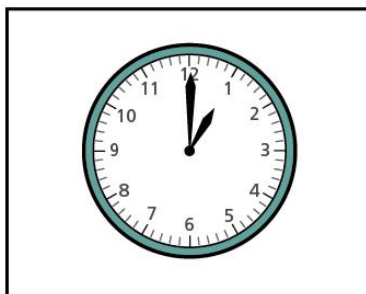
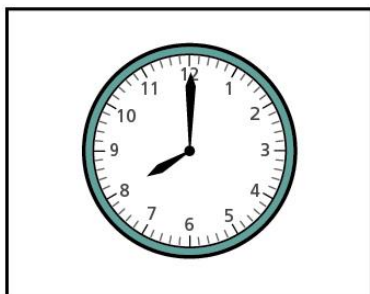
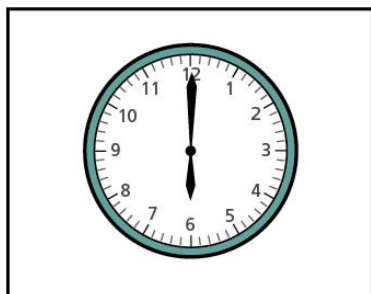
What Time Is It?



It is 11 o'clock.

Time to the hour

I Match the clocks to the times.



8 o'clock

6 o'clock

4 o'clock

1 o'clock

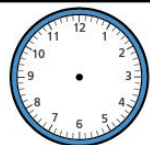
2 Complete the pattern.



1 o'clock



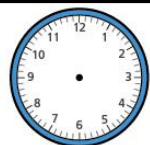
_____ o'clock



3 o'clock



4 o'clock

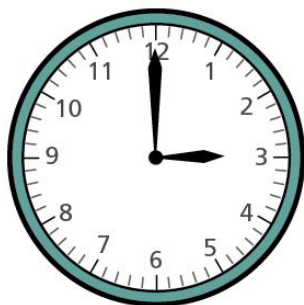


_____ o'clock

What time comes next?

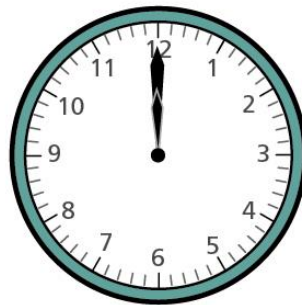


3 Tick the time that matches the clock.



3 o'clock

12 o'clock

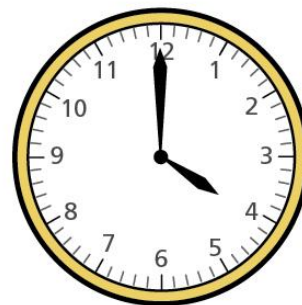
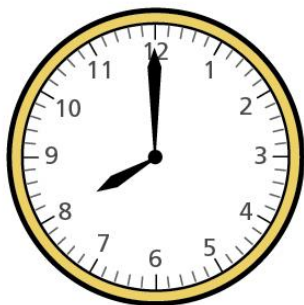


3 o'clock

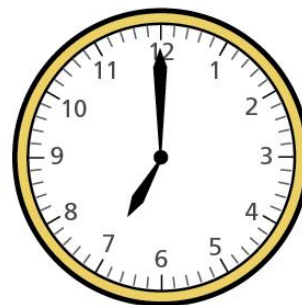
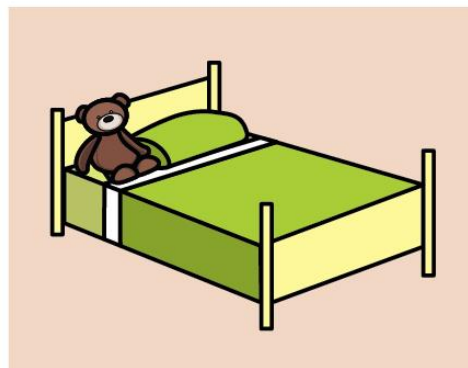
12 o'clock

4 Tick the time that is more likely.

a) Mo goes to school.

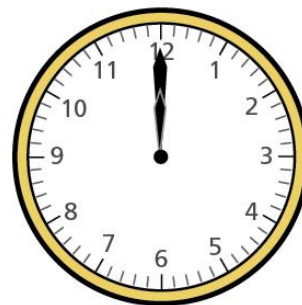
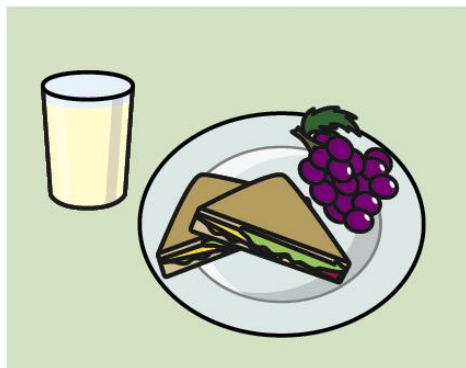


b) Mo goes to bed.





4 c) Mo has lunch.



Your task:



Year 1:

Something easier: Complete the 'something easier' activity sheet to recap reading the time to the hour.

Main activity: complete the 'main activity' sheet. Can you use your knowledge of time to solve the problems?

Something Harder extension: Complete the 'something harder' activity sheet after completing the main activity. Explain your answers fully.