

Uh-uh! A forest!
A big dark forest.
We can't go over it.
We can't go under it.



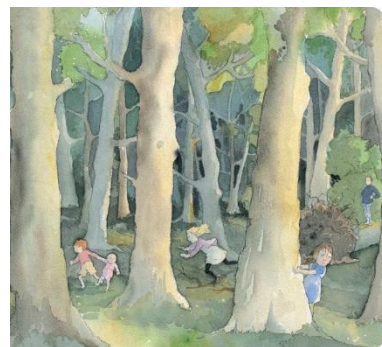
Oh no!
We've got to go through it!
Swishy swashy!

Uh-uh! Grass!
Long wavy grass.
We can't go over it.
We can't go under it.



Oh no!
We've got to go through it!
Squelch squerch!

Uh-uh! Mud!
Thick oozy mud.
We can't go over it.
We can't go under it.



Oh no!
We've got to go through it!
Stumble trip!

