

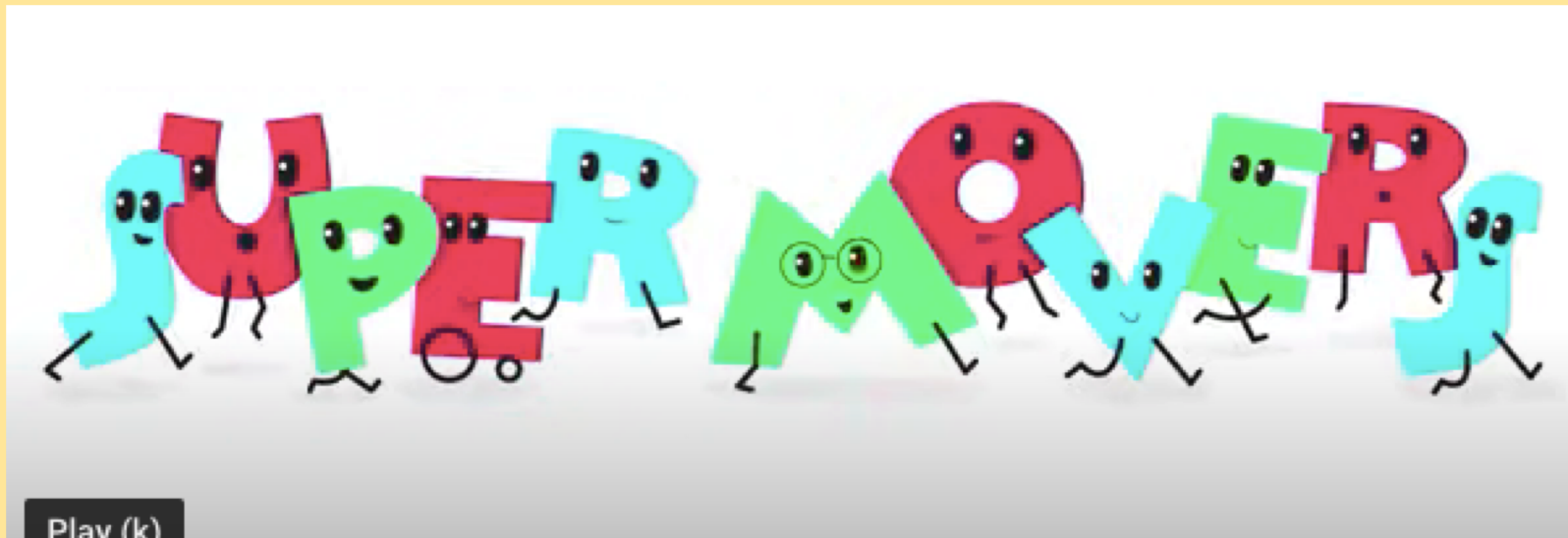
**LO: To identify letter names to letter sounds.**

Must: Can identify the letter sounds.

Should: Can identify the letter names.

Could: Match Capital letters to lowercase letters.

Let's get moving!  
Let's do the alphabet  
song together!



<https://www.youtube.com/watch?v=jYeMpUdufNk>

Every letter has a sound or sounds that it makes.

Every letter also has a letter name.

Click on the letters below to hear the  
sounds.

a b c d e f g h i j k

l m n o p q r s t u v

w x y z

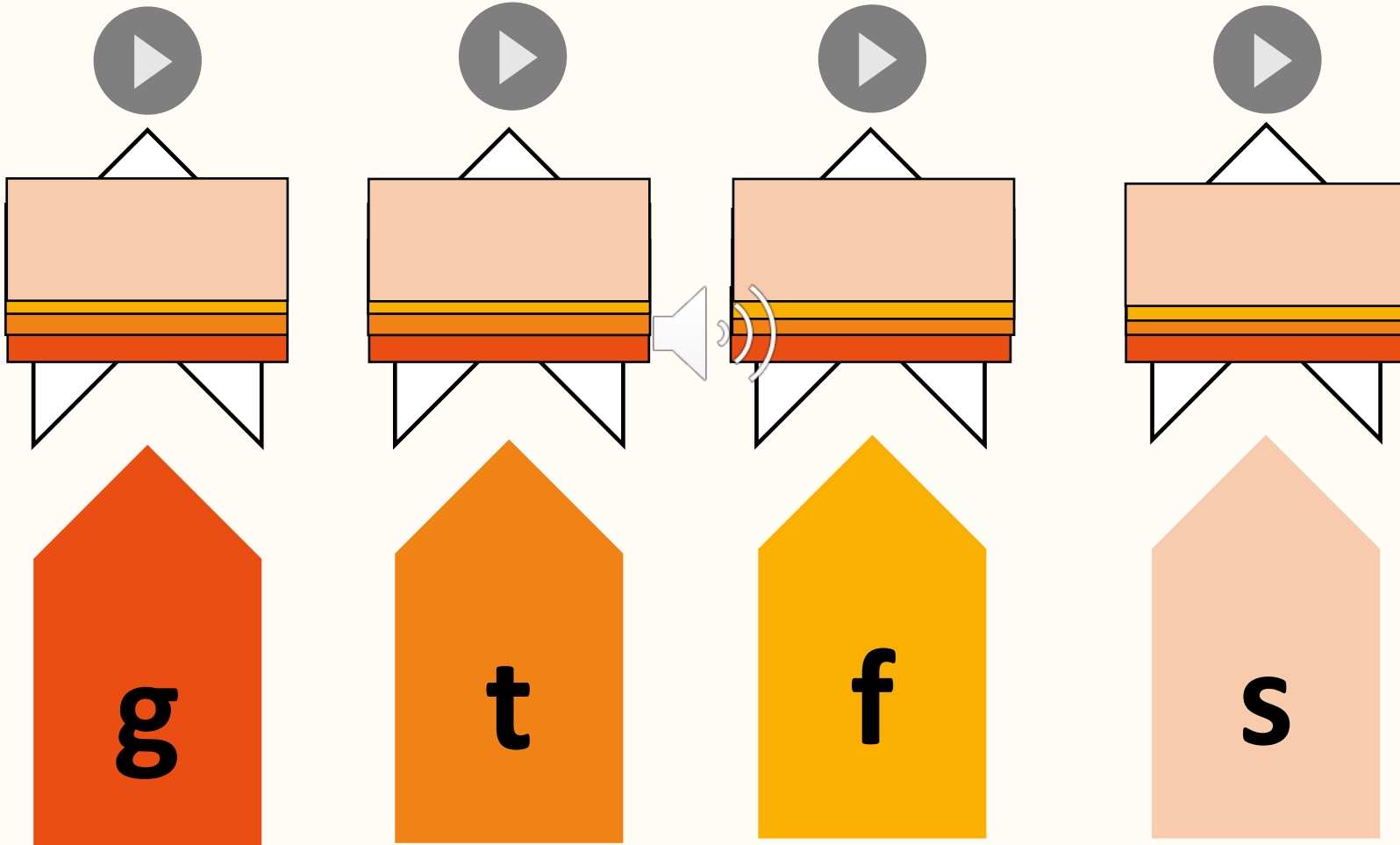
Click on the letters below to hear the  
letter names.

a b c d e f g h i j k

l m n o p q r s t u v

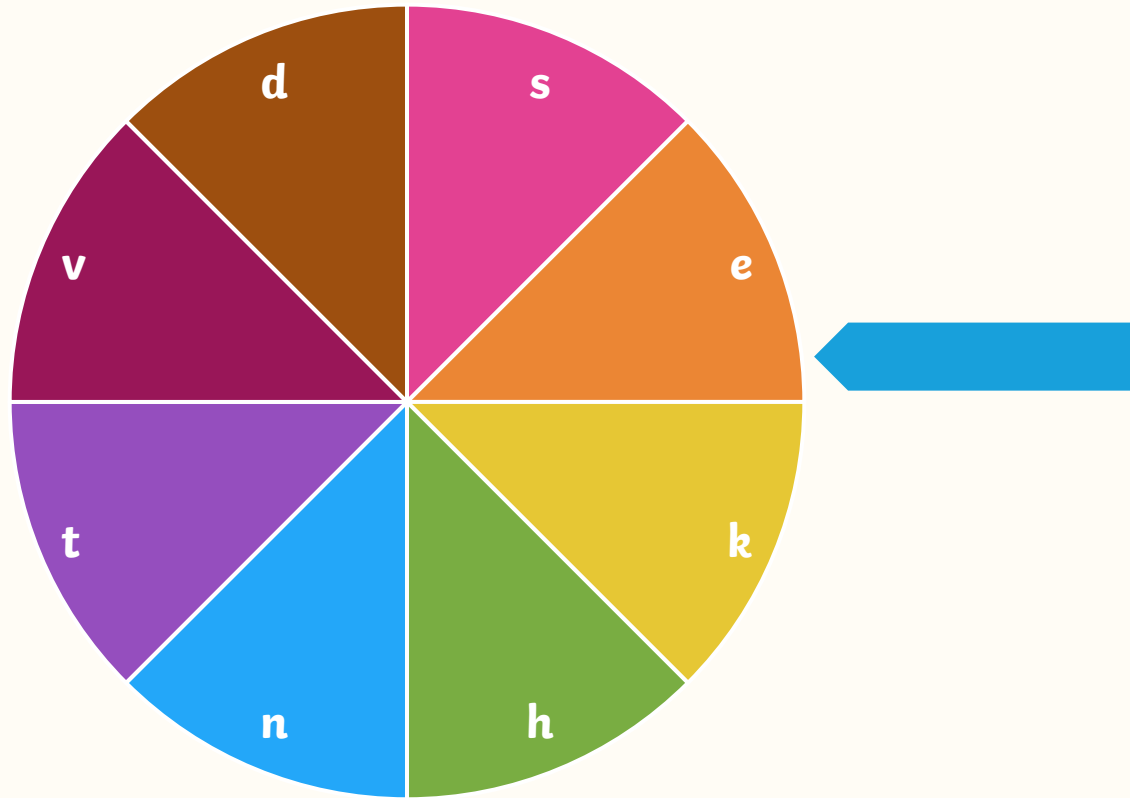
w x y z

Click on the cards to match the sounds to the letter names.



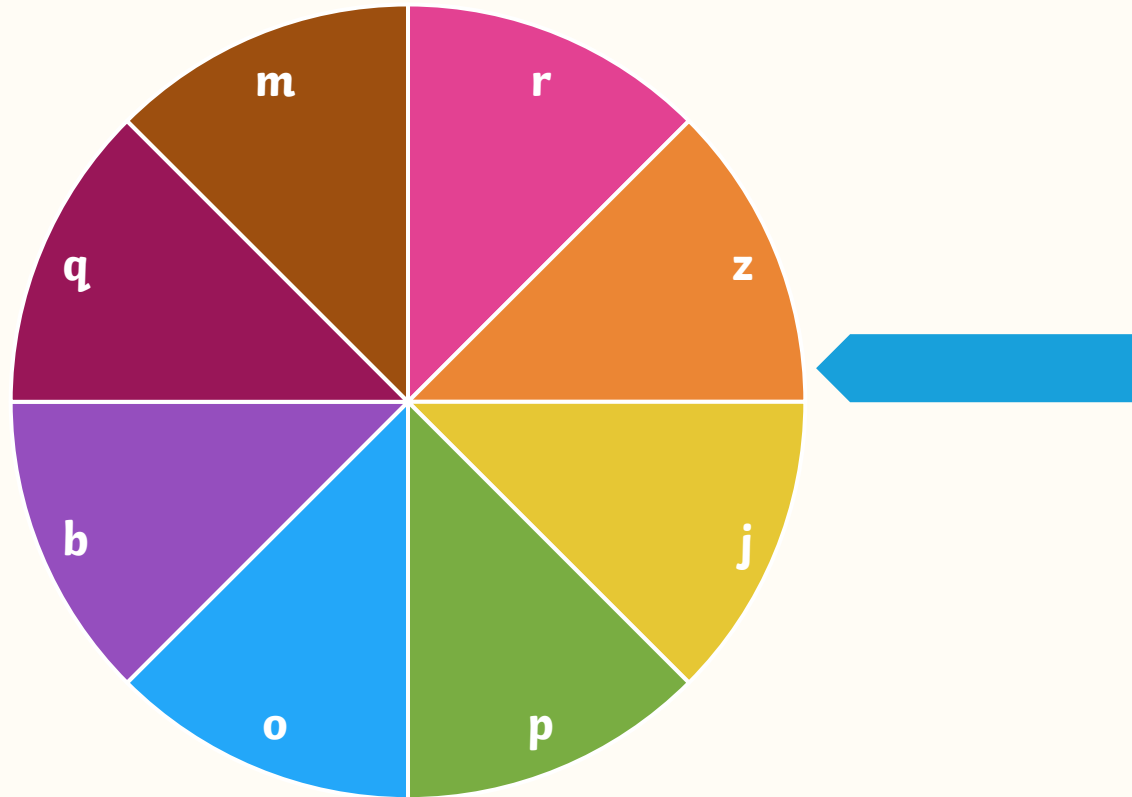
# Spin the Wheel

Say the sound that the spinner points to.



# Spin the Wheel

Say the letter name that the spinner points to.





# Task:

Reception: Cut out the letters and match them to the missing spaces.

Year 1: Can you fill in the missing letters using your neatest handwriting.

Challenge: Uppercase race  
How quickly can you write the capital letter next to the lowercase letter?