

Thursday 25th February 2021

LO: to tell the time to the hour.

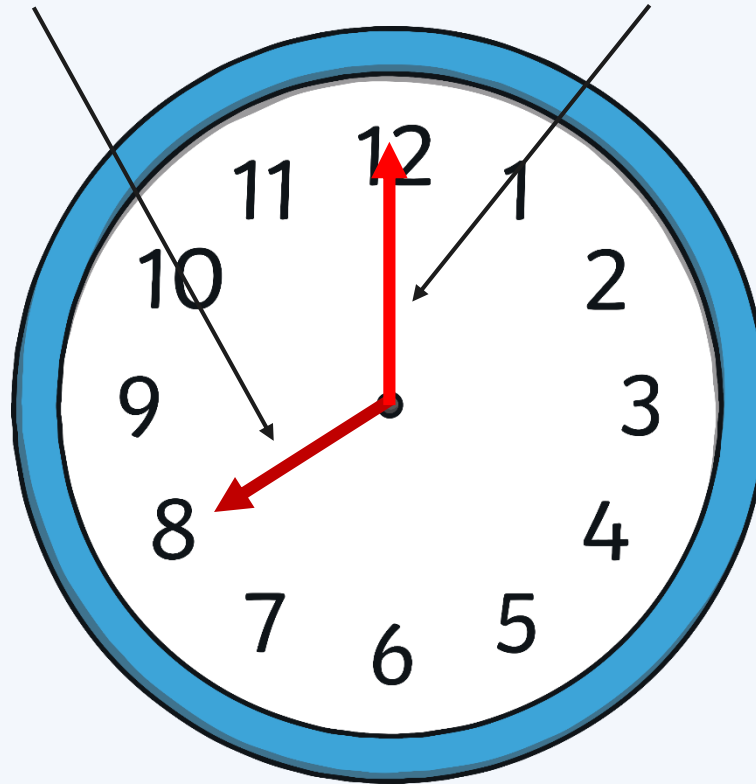
Hours and Minutes

This is the **hour** hand.

This is the **minute** hand.

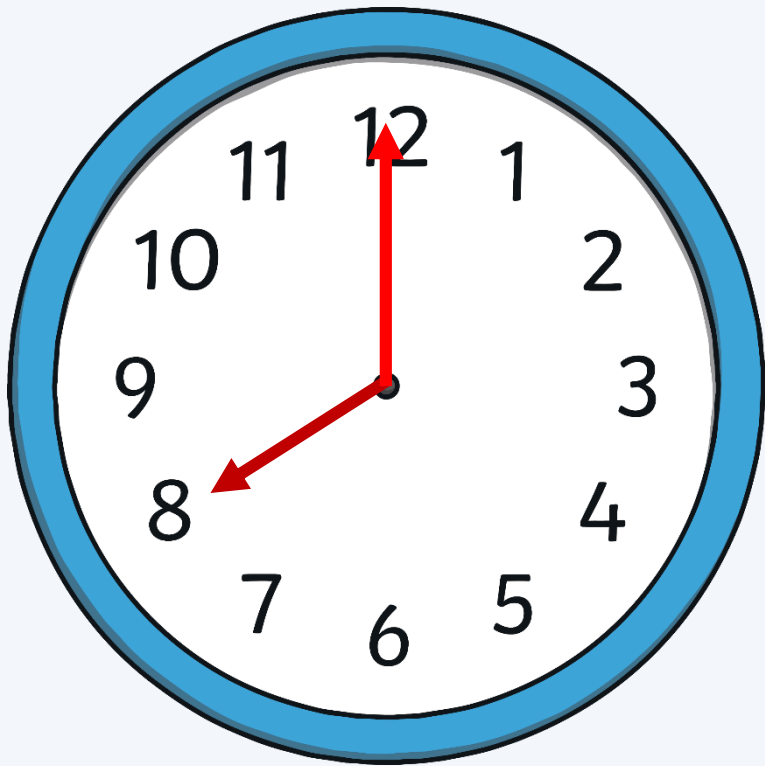
It is the shortest hand on the clock.

It is longer than the hour hand.



Hours and Minutes

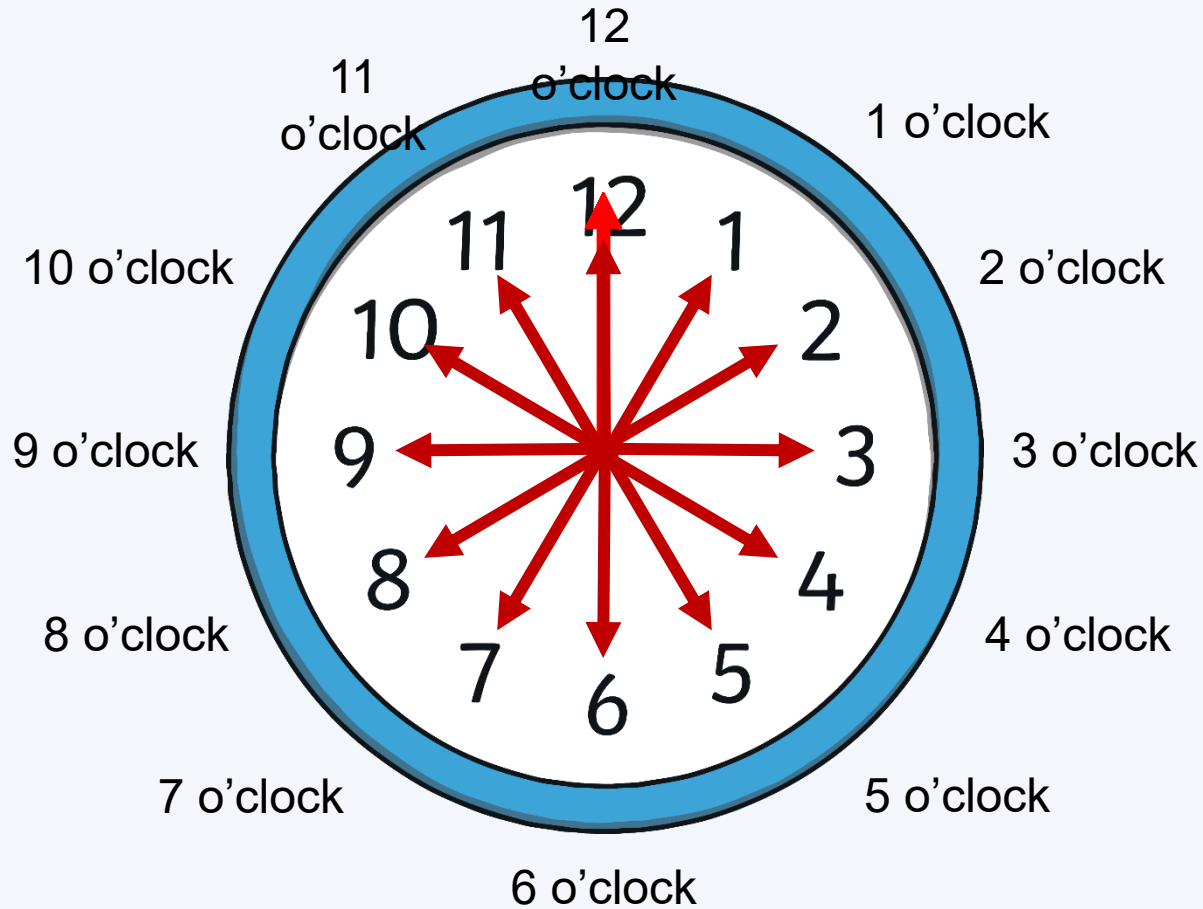
When the minute hand is pointing to 12, it is showing a full hour.
We call this time '**o'clock**'.



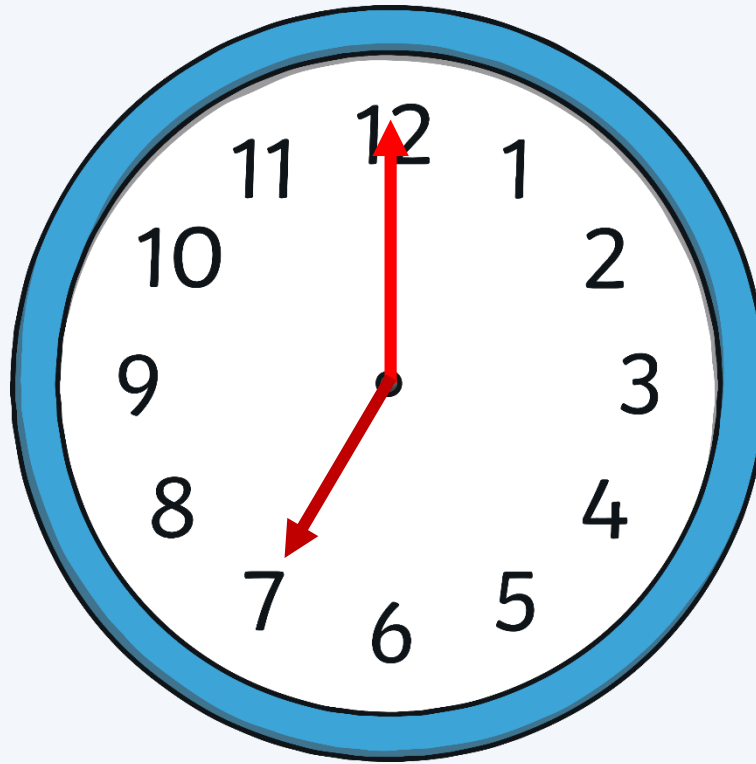
On this clock, the hour hand is pointing at the 8 and the minute hand is pointing to the 12.

This clock is showing that the time is **8 o'clock**.

What Time Is It?

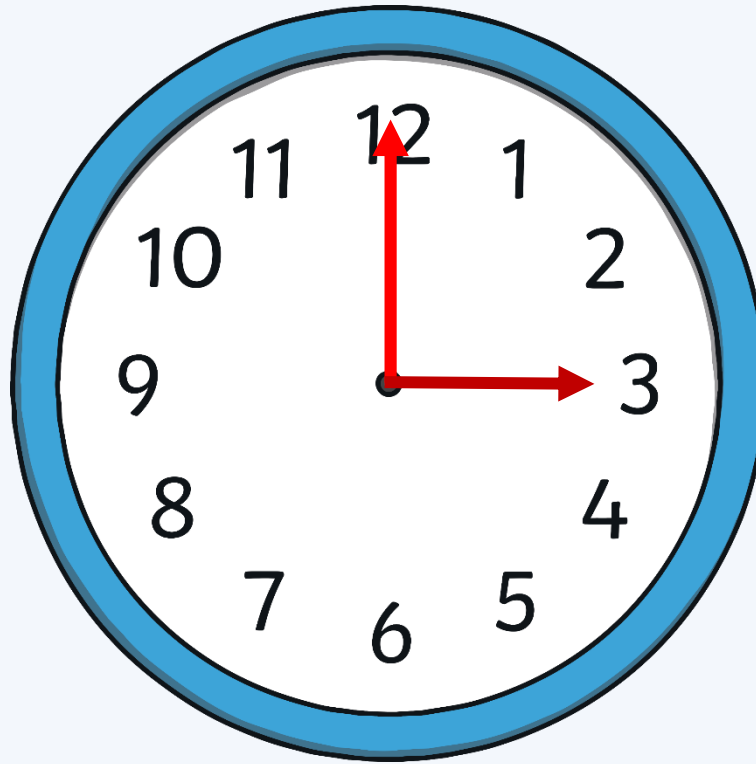


What Time Is It?



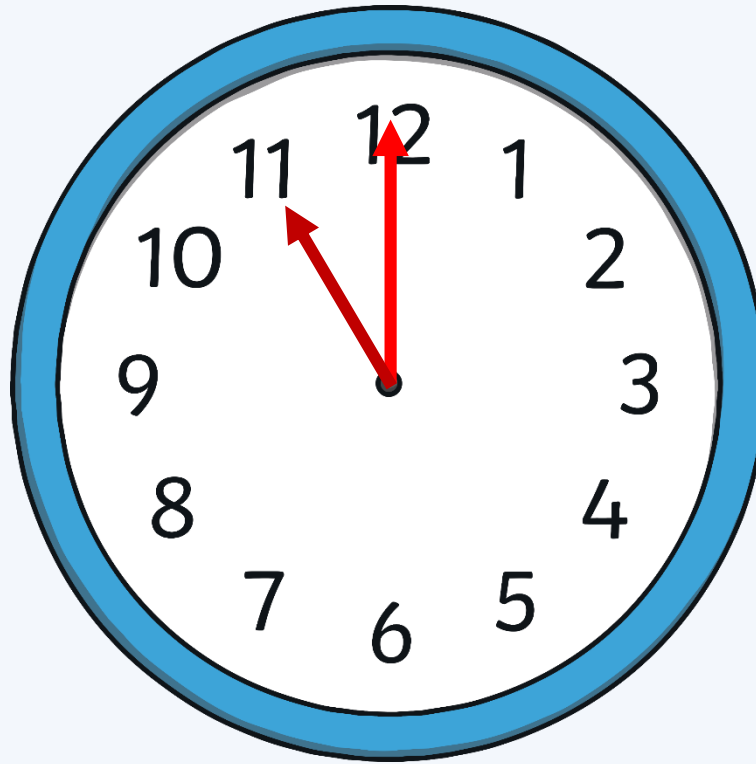
It is 7 o'clock.

What Time Is It?



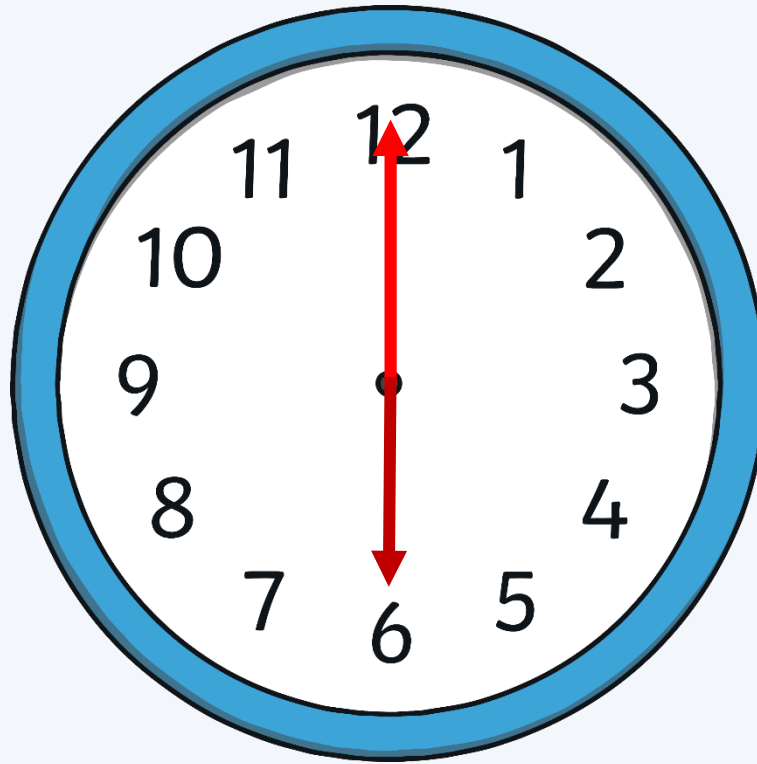
It is 3 o'clock.

What Time Is It?



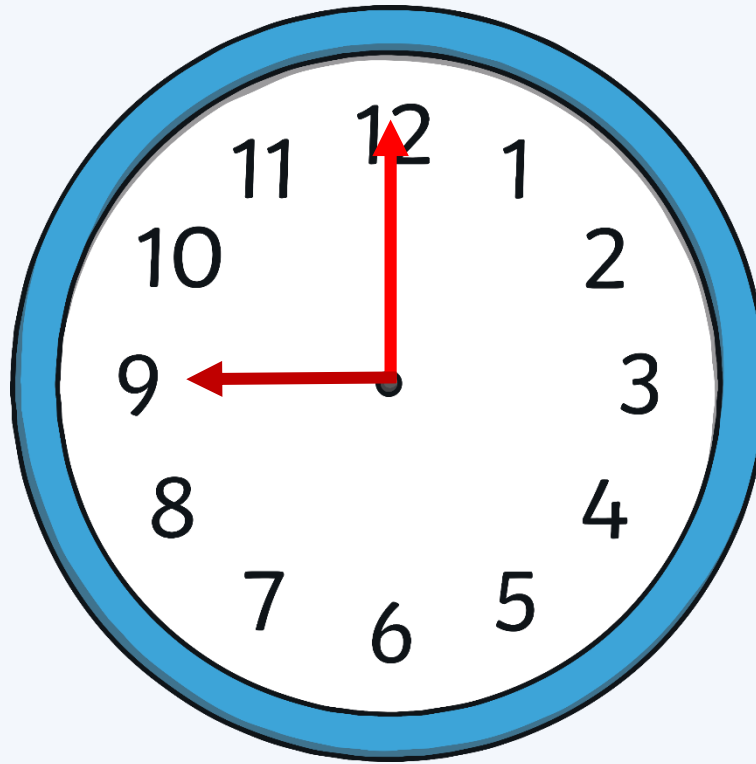
It is 11 o'clock.

What Time Is It?



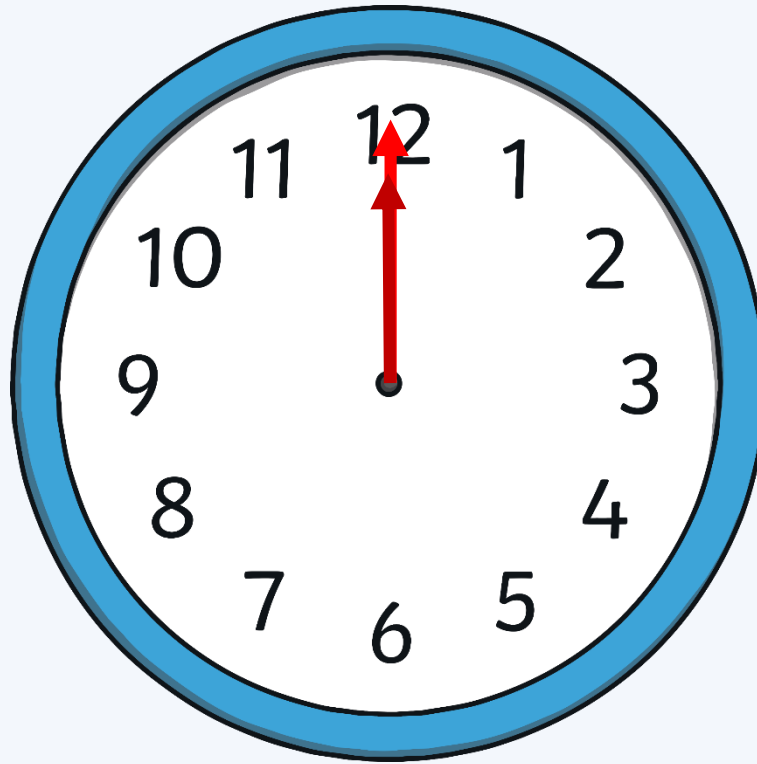
It is 6 o'clock.

What Time Is It?



It is 9 o'clock.

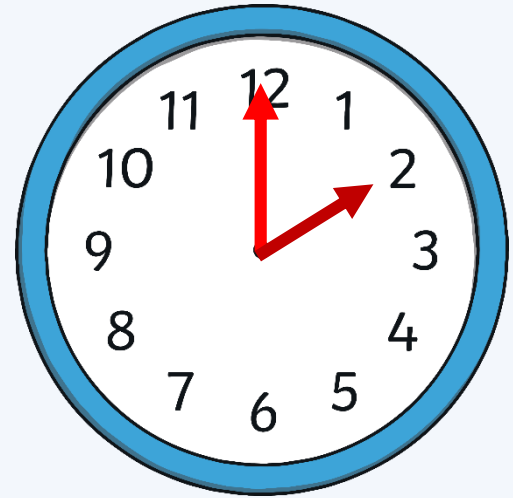
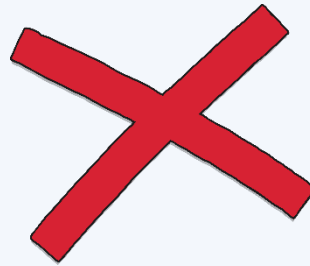
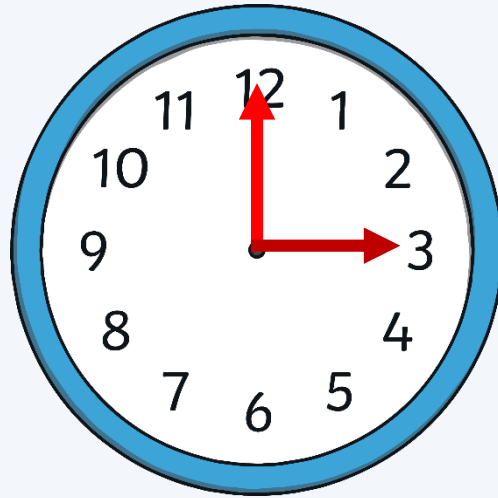
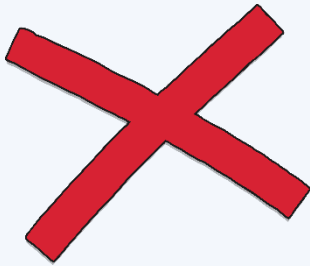
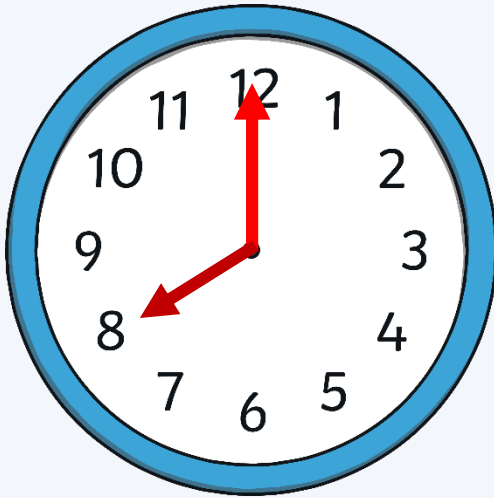
What Time Is It?



It is 12 o'clock.

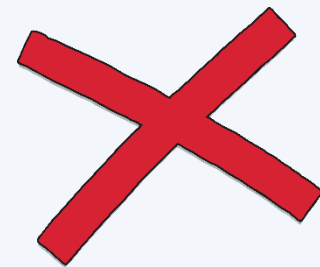
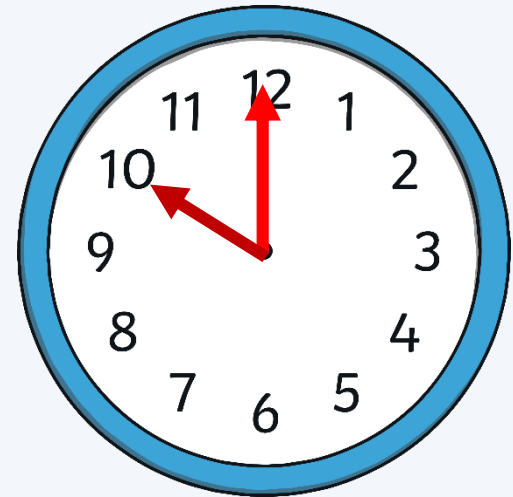
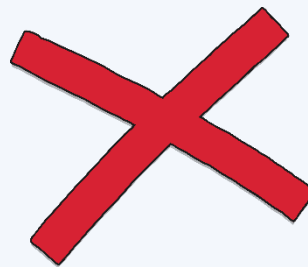
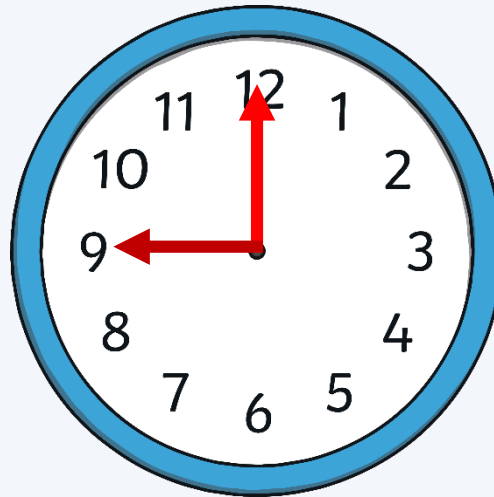
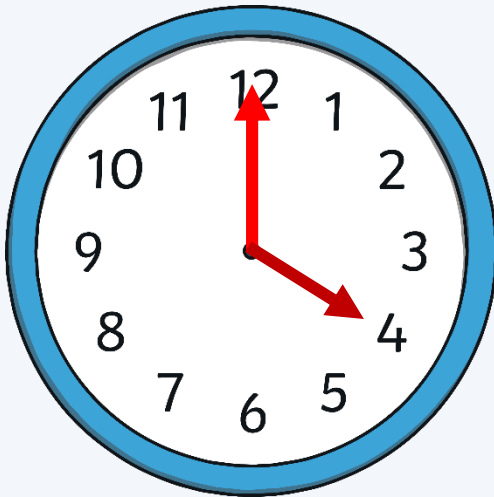
What Time Is It?

Which clock shows 2 o'clock?



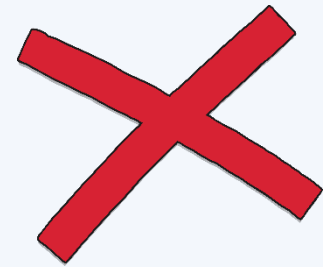
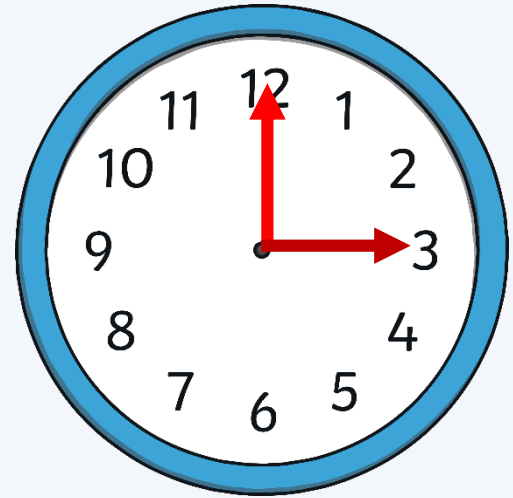
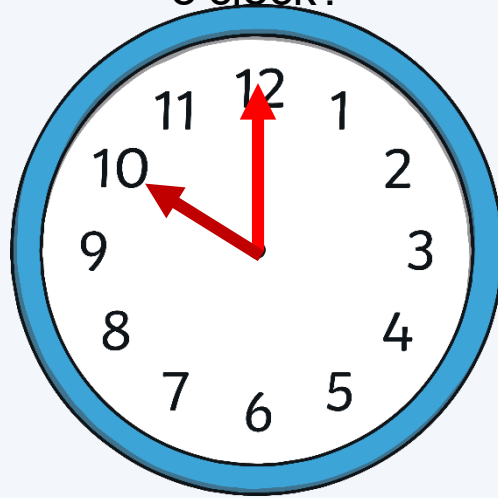
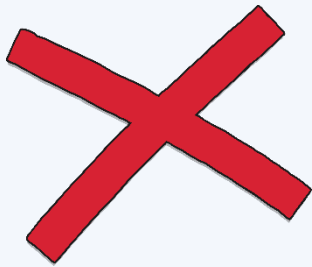
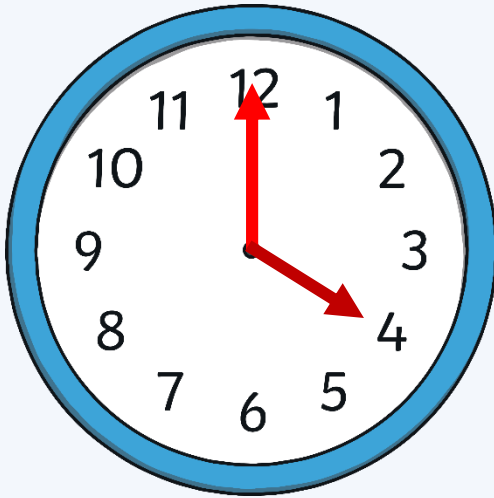
What Time Is It?

Which clock shows 4 o'clock?



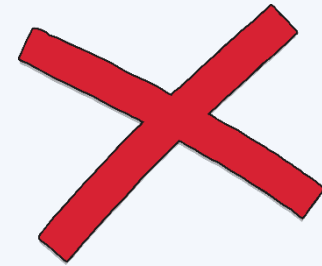
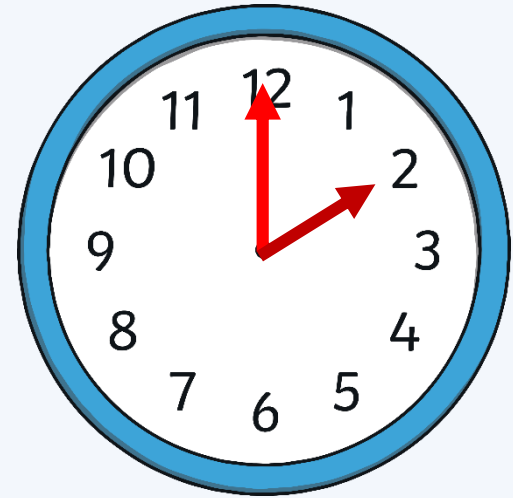
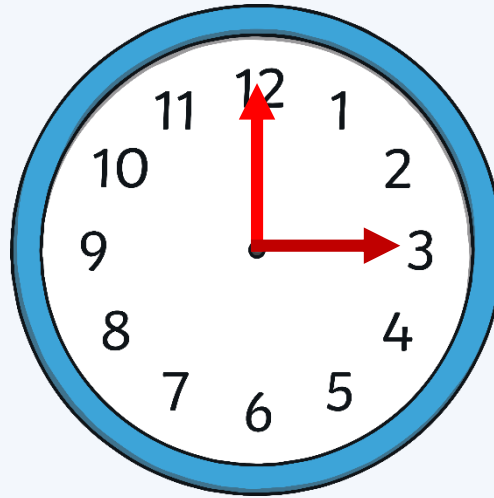
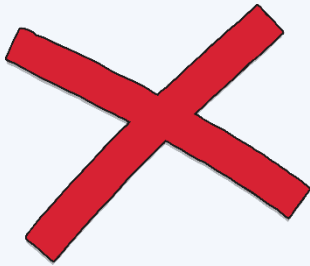
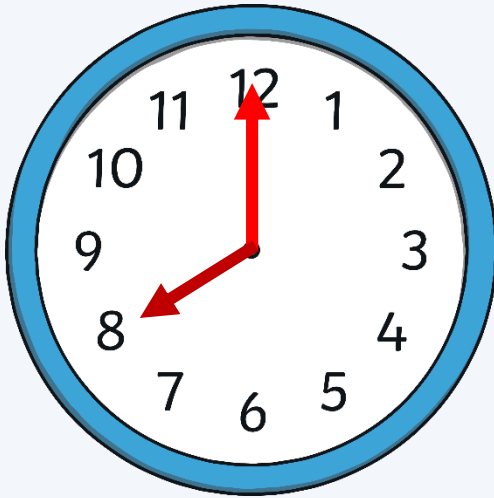
What Time Is It?

Which clock shows 10 o'clock?



What Time Is It?

Which clock shows 3 o'clock?



Your task:



Year 1:

Something easier: build your own clock.

Main activity: read the clocks and record the time. Then, can you draw the hands on the clocks to show the correct time?

Something Harder extension: Complete the 'something harder' maths problems. Ask an adult to discuss the problems with you, using the questions prompts.

Optional:
<https://nrich.maths.org/9026>

Reception:

Main activity: build your own clock using the template.

Something harder: read the clocks and write the time. Complete the 'something harder' activity sheet.